



CHRIS MAENE

TRADITION & INNOVATION





DISCOVERING A NEW SOUND WORLD

Whether you are a world-famous musician or a piano-passionate but demanding individual, the synergy between music, artist and instrument remains essential to your high quality music making. In order to excel, your piano must offer an unlimited range of expressiveness. The instrument must be a source to your inspiration.

In this age of globalization even grand pianos are commonly standardized.

Driven by intense research and the ultimate wish to build an innovative and artistic alternative to the contemporary grand piano, Chris Maene has launched a bold new generation of instruments.

Combining in-depth knowledge of more than 300 years of piano manufacturing consisting of proven historical values, with the latest, state-of-the-art techniques, the Chris Maene straight-strung grand pianos represent an unprecedented and unique philosophy in contemporary piano-making.

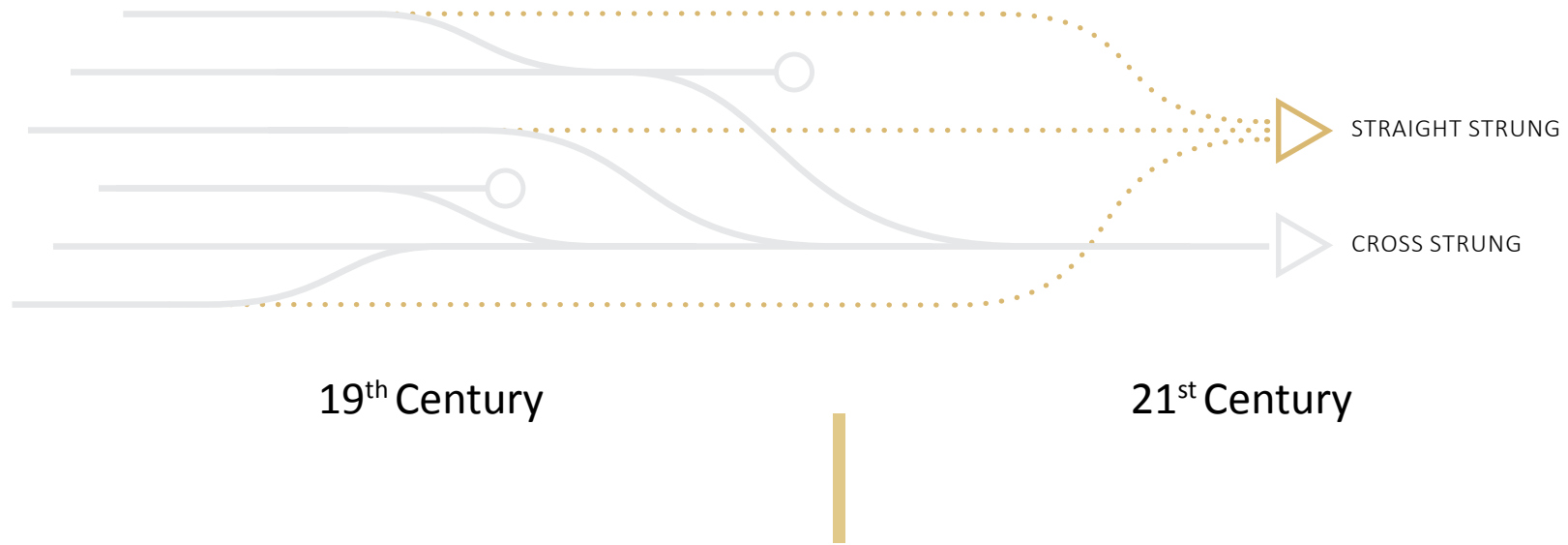
For the first time in decades and based on a completely new straight-strung design, handcrafted to perfection, musicians and audiences can discover a genuinely new sound world from the grand piano.



PROVEN HISTORICAL VALUES BROUGHT BACK THROUGH INNOVATION

Contrary to what one would expect, the contemporary concert grand is not the result of a steady evolution from a primitive stage to ultimate perfection. From its invention around 1700 and development until the end of the 19th century, history has seen a vast range of pianos, but they all had one thing in common: they were straight-strung. In fact, most of the repertoire played today was written by composers who, during their lifetime, were familiar with straight-strung instruments only. .





With the disappearance of many piano manufacturers during the first half of the 20th century, due to the two world wars and its financially disastrous interbellum, the urge for research along with continuous innovation in piano manufacturing faded away. Piano manufacturers were particularly focused on cross-strung pianos and mass production. As a result, many of the innovations that were introduced on cross-strung instruments (a cast-iron frame, modern action, etc.) were never applied in straight-strung instruments.

Subsequently there haven't been any fundamental changes nor important developments in grand piano manufacturing for more than a century. As a matter of fact all contemporary pianos are variations on the same cross-strung concept.

The Chris Maene Grand Piano is the first to bring back the straight-strung concept to the 21st century. It combines clear sound, transparent bass and richly colored registers, so typical for straight-strung instruments, with the action, stability and power of contemporary piano-playing.





CONCEPT AND DESIGN: THE MISSING LINK

The straight-strung grand piano differs in many more ways from the contemporary piano than just the altered string-concept. It fills out the missing link between the historical aspects of piano playing and building, and the nowadays needs for pianists and concert halls.

Since strings, bridges and soundboard all work together to create the sound quality of the instrument, all of these aspects have been revisited and optimized through scientific research and Computer Aided Design.

In the Chris Maene straight-strung pianos, the grain of the soundboard wood is directed parallel to the strings, instead of to the bridges. Since the vibrations move more quickly in the length of the grain rather than in the width, this technique is resulting in a beautiful and transparent sound, enhancing the characteristics of every register.



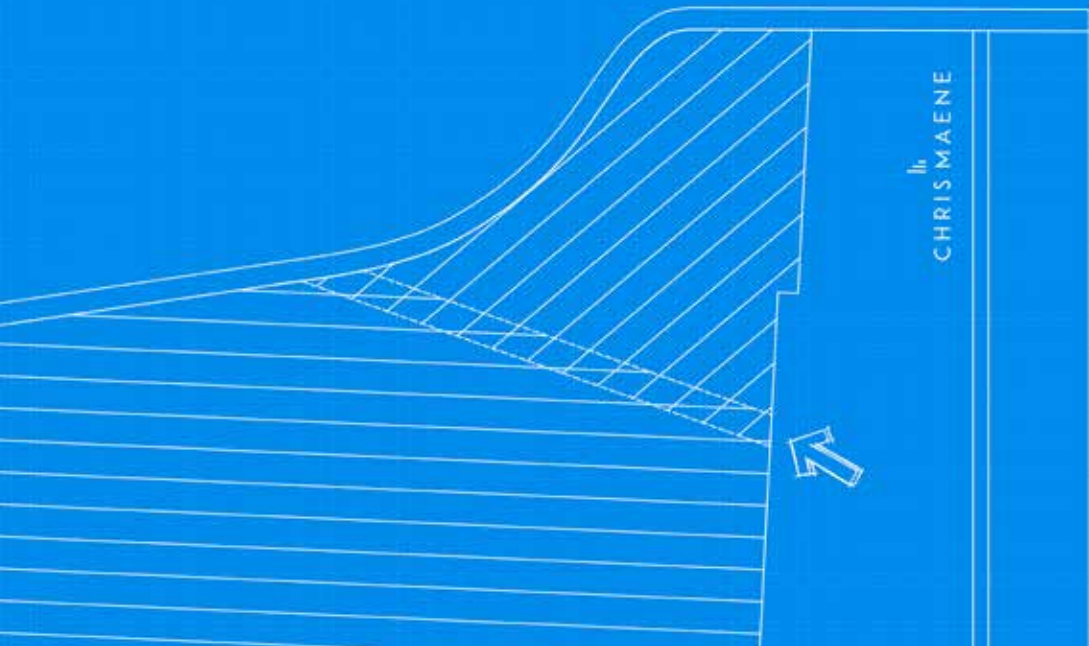
|||

THE MAKING OF... : MERGING CRAFTSMANSHIP, EXPERIENCE AND TECHNOLOGY TO SERVE THE MUSIC

The Chris Maene straight-strung pianos merge tradition and innovation : combining the straight-strung concept with a single-piece continuous bent rim is iconic for its artistic philosophy.

This first step in the manufacturing process is crucial for the perfect balance between construction stability and sound quality.





To achieve the same sustain and power of a contemporary piano in the treble register, Chris Maene has come up with an innovative solution: a unique, patented soundboard consisting of two parts. Contrary to the bass and middle register, the grain of the soundboard of the treble part doesn't follow the strings but has been redirected parallel to the bridges. This maximizes the use of the smaller soundboard area and results in a more powerful, rich sound quality for the upper register.

The soundboard's shape, its thickness and the positioning of the support ribs are all designed to enhance the straight-strung concept. In order to ensure the highest quality of performance standards, each Maene piano is custom-made.

Contrary to standardized grand piano making, the inner rim is perfectly matched to the individual soundboard curvature, which gives every instrument its own character.





To hold the immense string tension (up to 20 tons), the cast-iron frame is an essential component since it has to give the necessary strength to the instrument.

Modern CNC technology ensures drilling and shaving to an absolute degree of precision and perfection. The frame is sanded several times by hand to achieve a beautifully satin finish that reflects Chris Maene's exclusive care and his craftsmanship's pride.



The braces are not positioned in a fan-like shape, but they follow the straight-strung principles since they are put in the same direction as the strings for a stronger support of the string tension.





Only high-quality strings are used. In order to achieve the characteristic bass sound, the bass strings are wound with brass instead of red copper.

This extraordinary view from the inside displays the high quality of the hand-made action and its customized set-up.

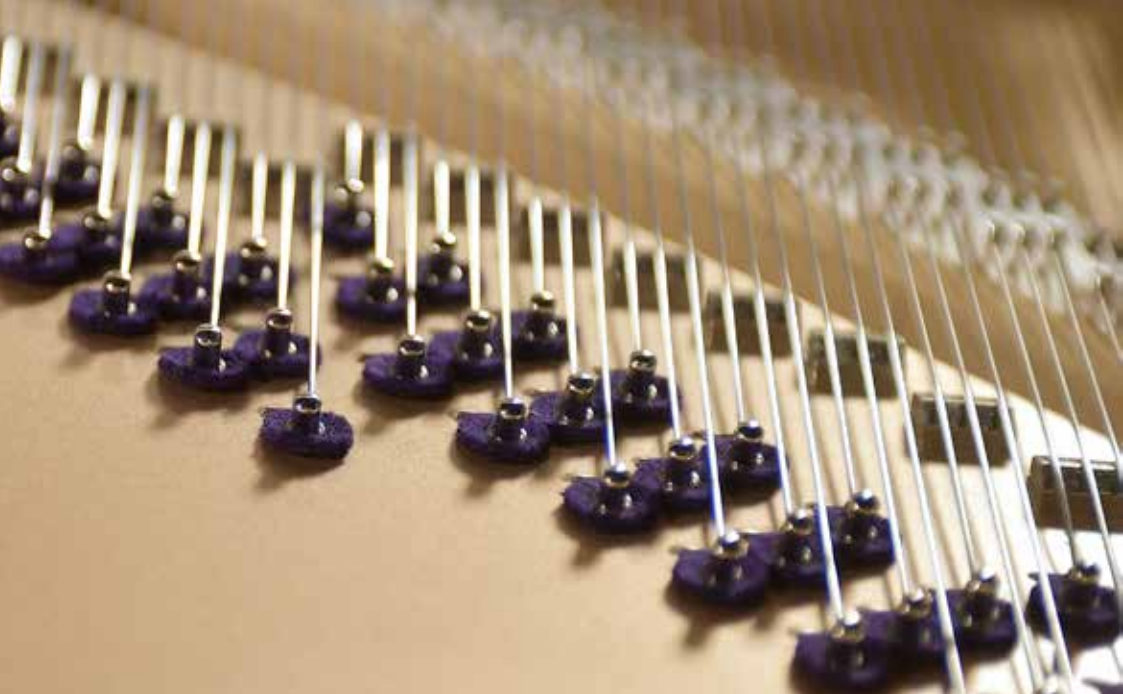




To preserve the traditional, handcrafted character of the soundboard and to establish a visible aesthetic link to the past, it is polished by hand (French polishing), instead of relying on the synthetic lacquer that is commonly used today.

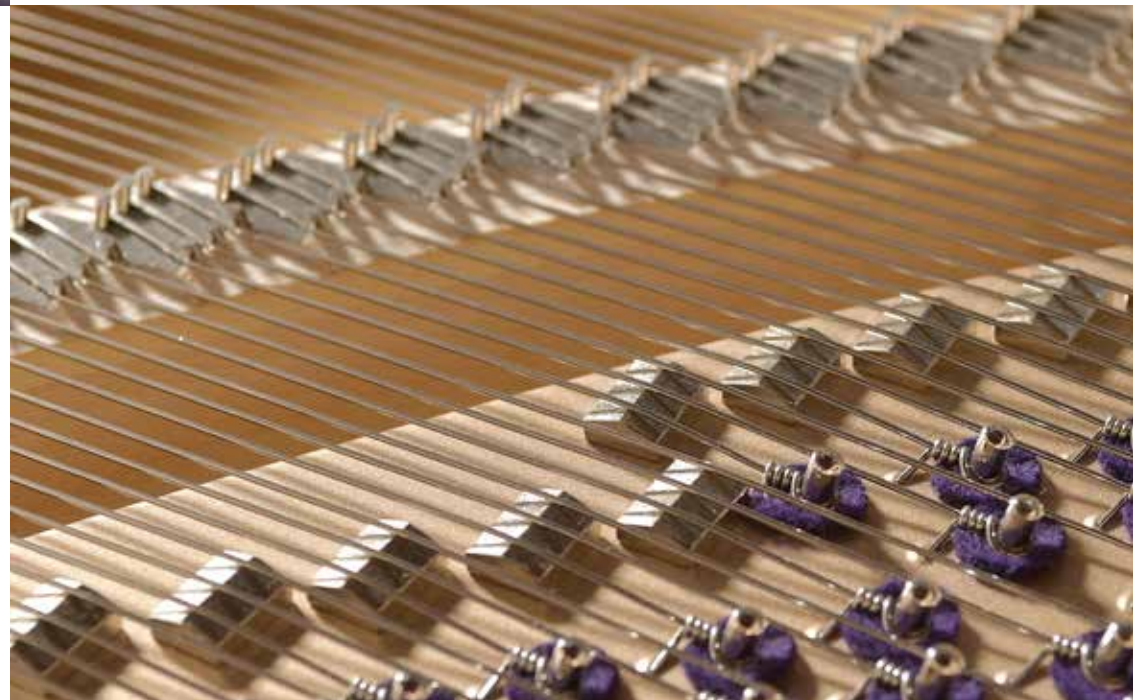
The action is the key to every single pianists' sound. The Chris Maene Straight Strung Grand Pianos benefit from a modern custom-made action with Renner-parts and a state-of-the-art Kluge keyboard, offering pianists a familiar and reliable sense of touch.





Referring to the best historical grand pianos of the 19th century, the strings of every instrument are individually attached, giving more stability and resonance to the sound.

The movable duplex enables extremely accurate tuning and extraordinary overtones in every register of the Chris Maene Straight Strung Grand Piano.

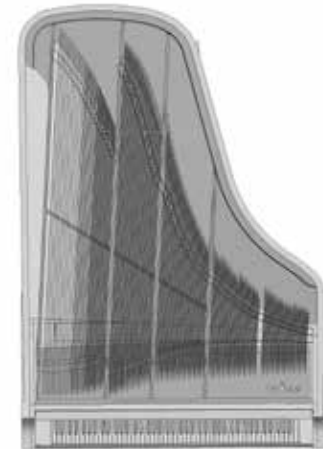




Perfectly suited for smaller concert halls or private use, the Chris Maene Parlor Grand CM//228 is the shorter version of the Chris Maene Concert Grand CM//284. It brings the characteristic straight-strung sound, its transparency and brilliance, in a more intimate sized grand piano-model.

THE PARLOR GRAND CM//228

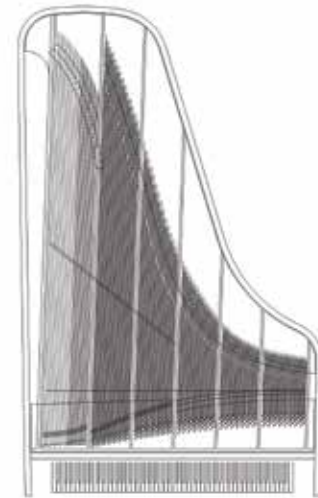
- Dimensions: L 228 cm / W 157 cm
- Compass: 90 keys, GGG – c''''
- Keyboard: Kluge, Remscheid, Germany (built according to Chris Maene specifications)
- Black keys: ebony wood
- White keys: non-slippery and non-reflecting composite material
- Bass strings: Bespoke brass wound bass strings, handmade and custom calculated
- Action: Renner action and hammers / Built according to Chris Maene specifications
- Soundboard: Patent Chris Maene / Red spruce from the Alps / Hand polished



The Chamber Music Concert Grand CM//250 is specifically inspired by the best straight strung grand pianos of the 1860's, such as Bechstein, Blüthner, Pleyel or Erard. A more delicate design, a thinner rim and in sound referring even more to the glorious instruments of the end of the 19th century, make this model perfectly suited for chamber music, smaller concert halls and private collections.

THE CHAMBER MUSIC CONCERT GRAND CM//250

- Dimensions: L 250 cm / W 157 cm
- Compass: 90 keys, GGG – c''''
- Keyboard: Kluge, Remscheid, Germany (built according to Chris Maene specifications)
- Black keys: ebony wood
- White keys: non-slippery and non-reflecting composite material
- Bass strings: Bespoke brass wound bass strings, handmade and custom calculated
- Action: Renner action and hammers / Built according to Chris Maene specifications
- Soundboard: Patent Chris Maene / Red spruce from the Alps / Hand polished



THE MAENE FAMILY : DECADES OF EXPERIENCE IN PIANO MANUFACTURING

Albert Maene and Zulma Doutreloigne founded the Maene company in Belgium in 1938. Albert Maene was an excellent musician and craftsman being both an organist and a music teacher. His wife distinguished herself through her unique business skills. Combining the skills and talents of both enabled the stable growth of the family business. The purchase of the old brewery 'De Molen' provided the necessary premises for production and serves today as a museum for the Chris Maene Collection, which displays more than 300 unique historical instruments.





OTHER INSTRUMENTS PREVIOUSLY BUILT BY CHRIS MAENE



CHRIS MAENE

Replica of a German harpsichord
"Johan Mayer" from 1619



CHRIS MAENE

Replica of a Tangent piano
"Späth & Schmahl" from 1794



CHRIS MAENE

Replica of a fortepiano
"Anton Walter" from 1799





CHRIS MAENE

Replica of Beethoven's Broadwood
from 1817



CHRIS MAENE

Replica of the first Steinway piano
"Kitchen Piano" from 1836



CHRIS MAENE

Replica of an Ignaze Pleyel concert grand
from 1843





CHRIS MAENE FACTORY

Extensive knowledge of historical instruments, intensive research combined with comprehensive knowledge of modern instruments and a factory with only highly skilled and specialized craftsmen: this is what makes the Chris Maene Factory truly unique in the world.







Chris Maene pursued his passion for instrument making from a young age: he built his first instrument at 16. Ever since he has been avidly building, restoring and collecting valuable instruments. Chris Maene inherited the business from his father, creating a continuous expansion.

With his genuine experience, he was able to build up a production workshop employing only specialists, many of whom trained in Hamburg, Berlin, Poland, Tokyo and Paris. The company has developed a unique profile: a highly specialized piano factory, an impressive collection of historical instruments, and several piano stores across Belgium.

In order to ensure the continuity, development and future of the company and its factory, Chris Maene's sons, Dominique and Frederic, have been actively involved in the company and its strategy since 2004. They share their father's passion for piano-making and have learnt the craftsmanship through him.

CHRIS MAENE & ARTISTS

More than a trademark, the three hares of the Chris Maene Factory symbolize the essential synergy between composer, performer and instrument maker. The interaction between these three was of great importance to the development not only of piano manufacturing, but also of piano music in the eighteenth and nineteenth centuries.

The Chris Maene Factory cherishes this philosophy and for decades it has worked closely with the best musicians and the most important music institutions around the world.





Daniel Barenboim

'The clearly distinguishable voices and colour across its registers of Liszt's piano inspired me to explore the possibility of combining these qualities with the power, looks, evenness of touch, stability of tuning and other technical advantages of the modern piano. I am so delighted to have worked with Chris Maene, who had the same dream, and I must pay tribute to his incredible technical expertise and his deep respect for both tradition and innovation ... It may not look that different, but its construction and sound possibilities make it a brand-new piano which I hope will be embraced by pianists and music-lovers as a true alternative for the twenty-first century.'



Eric Le Sage

'What a pleasure to encounter a new instrument that brings you new ideas and takes you to new musical territories. It will be perfect for the repertoire I am playing and a huge bravo for the team and its extraordinary care in production and conception.'



Hannes Minnaar

'It is an utterly beautiful and convincing instrument. The sound is definitely different and inspires me particularly!'



Alexei Lubimov

'For both our ears and our mind it is obviously a new sound. Everything is so clear, transparent and beautifully in balance! And it is playing easily.'



Jan Michiels

'So many more possibilities of expression for our core repertoire.'





Emanuel Ax

'What a thrill to encounter the Maene piano for the first time! It seems to combine the assets of the old 19-century piano's with the power and brilliance of the modern instrument. And the feel of the keyboard is a dream!'



Pierre-Laurent Aimard

'I'm so pleased to be able to play Ravel on this instrument'



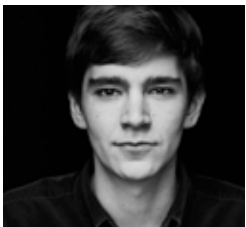
Frank Braley

'I'm touched by the enormous amount of personality the instrument has. Like historical instruments I can hear different registers with their own color and special character, just like an orchestra.'



Liebrecht Vanbeckevoort

'The sound of this piano opens an entirely new world. Sitting at this grand piano I feel like a choirmaster. The instrument responds to my playing style in great detail, with plenty of variation in timbre and nuance.'



Bram de Looze

'It is my greatest pleasure to explore this instrument with large responsive action, great touch, special tone and superb clarity in the lower registers. This pianomodel is an enrichment to the world of modern pianomanufacturing. This piano responds to my personal imagination and it generates highest musical expression.'



Julien Libeer

'It is a kind of blessing playing and recording on the Chris Maene Straight Strung Grand Piano. Whether you are playing this instrument or sitting in the audience, you can hear things in the music you have never heard before.'



MORE INFO, MEDIA & CONTACT

Visit our website www.chrismaene.com for the latest news and information, or follow our Chris Maene [facebookpage](#).
On our Chris Maene Youtube Channel you find testimonials, video recordings, “the making off” videos and many other interesting material.



CORPORATE SOCIAL RESPONSIBILITY

We care for our world and plant one tree for each sold or produced piano. More info on WeForest.org



For any specific demand, to plan your test-session or visit to the factory, please contact us via info@chrismaene.com
Factory address : Chris Maene Factory- Industriestraat 42- B8755 Ruislede, Belgium.



www.chrismaene.com

