

PREMIUM PIANO CATALOGUE

GP SERIES • LX SERIES • HP SERIES • KF-10 • DP603

 Roland





What makes a Roland piano special?



Classic or modern styling

Our premium Roland piano range is designed to complement the way you live, offering cabinets in a variety of styles, from traditional grands to modern statements that turn heads in a contemporary living space. Whether you play piano, or simply appreciate a sophisticated presence in your home, a Roland is the perfect finishing touch.



Touch that attracts

Every pianist has a unique touch, and when you play our Roland premium pianos, your individuality shines through. Our state-of-the-art keyboards and pedals respond faithfully to your signature style and bring out the personality in your playing, so when you're performing dynamic pieces that demand passion or sensitivity, you'll enjoy expression that keeps you inspired.



Sound that inspires

Play a Roland premium piano and you'll never settle for another digital instrument. Always driven by superior performance, our advanced pianos create sound differently to other brands, fusing our own unique modeling technologies for tone that's as rich, characterful and responsive as an acoustic instrument. Strike a key and the difference will amaze you.

Welcome

A piano is one of life's great pleasures. Since launching our first digital piano in 1974, we've strived to create inspirational instruments that not only excel for music-making, but transcend that role too, bringing warmth, culture, and sophistication into your home.

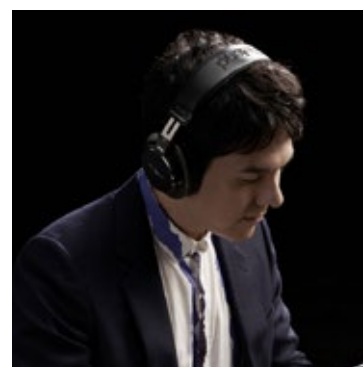
This premium piano catalogue showcases the culmination of almost half a century of Roland's innovation and craftsmanship. If you're a seasoned player, you'll be struck by the quality of our premium range, from authentic piano sounds to dynamic keyboards that feel alive beneath your fingers. But we also believe a piano can go further, with digital technology that lets you use headphones for silent practice, or helps you learn to play with onboard tuition and connectivity to apps.

If you prefer to appreciate music, our immersive onboard speaker systems bring your home to life, from a streamed playlist to a private piano recital from your children. Meanwhile, if you have an eye for beautiful things then prepare to fall for elegant, artisan-crafted cabinets that flow into your décor.

From the flagship GP grand pianos and luxurious LX series, to the stylish models in our HP, KIYOLA and DP lines, it's our pleasure to introduce you to a family of digital pianos without equal.

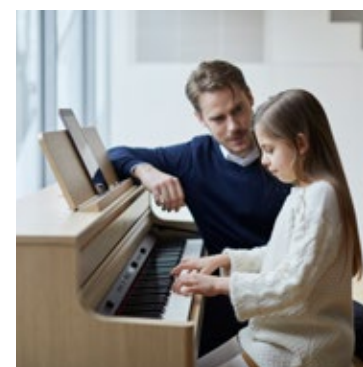
And as for where the piano goes from here, Roland's commitment to producing innovative musical instruments is embodied by the GPX-F1 Facet: the revolutionary concept piano that won our global Piano Design Awards and signposts where this wonderful instrument could be headed.

Then, now, and in the future—it has to be a Roland.



Digital creativity

All of our premium pianos blend aspirational styling and sound with digital features. Plug in headphones and practise whenever it suits you. Boost your learning with wireless connectivity, streaming music from your smartphone to the piano speakers and playing along. Or get inspired by additional sounds that include electric pianos, organs, harpsichord and strings.



Tuition features included

Roland's premium pianos make learning faster and more satisfying. Onboard tutorial features include a metronome, recorder for instant playback and self-appraisal, plus twin piano mode to let two students play in the same key range. And with wireless connectivity giving access to online tutorials and apps, it's never been easier to keep yourself engaged and improving.



Ten year warranty

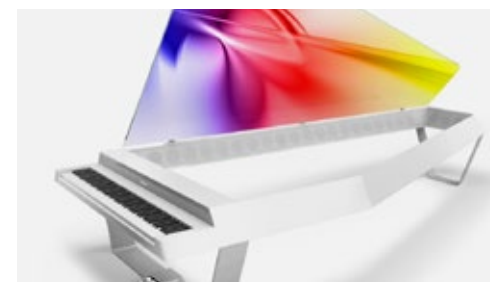
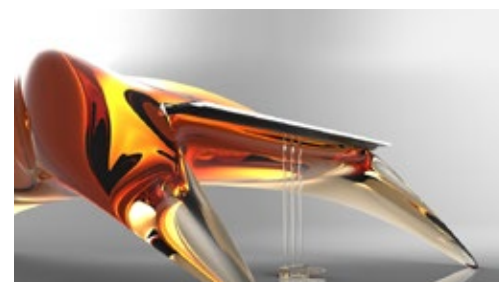
Roland's premium digital pianos aren't just built to last, with no tuning or maintenance required. We're also the first digital piano manufacturer to offer a ten-year warranty. It's testament to the confidence we have in our piano range, and to our status as a global leader with a reputation for technical innovation, exceptional durability, and unparalleled craftsmanship.

LOOKING AHEAD

Facet Grand Piano

Roland presents its vision of a digital concert grand piano with the unique GPX-F1 “Facet” concept

For almost 300 years the piano has enriched our lives, playing a central role in music and culture. The piano has played a major part in Roland’s history too, and since releasing the first all-electronic piano in 1973, we’ve strived to create the best digital pianos using our state-of-the-art technology. All the while, we’ve refined the sound and touch to satisfy the stage and practice needs of world-class pianists. But we also focus on making pianos that look as good as they sound, with a keen interest in exploring the limitations of traditional piano design. So in 2015, we challenged designers from all over the world to tear up the rule book and visualize the piano of the future. Through the Roland Digital Piano Design Awards, entrants were asked to design their ultimate “Concert Grand Piano” and Jong Chan Kim’s “Facet grand piano” was awarded the Grand Prize with a bold, fresh concept that respected tradition but also charted new territory. But that was just the beginning of a remarkable story, because Roland decided to bring the Facet grand piano to life by creating a fully playable working model.



A selection of entrants including submissions from the US, Japan, Poland, Italy, and Romania.



Bringing the Vision to Life

DOCUMENTING THE JOURNEY FROM CONCEPT PIANO TO CONCERT PIANO

Over the next few years, Roland's piano design team would often discuss what it would take to turn the Facet piano vision into reality, leading to deep late-night discussions about form, function and the future. And so in 2019, a small team of engineers decided to bring the Facet concept to life, by building a fully working model that people can actually play. The GPX-F1 Facet made its world premiere at CES 2020 in Las Vegas, U.S., inspired by three core themes: Design, Connectivity and Evolution. The innovative styling of the Facet incorporates evocative crystal-like polyhedrons and a unique 'floating' look. It's equipped with our latest piano modeling sound engine, keyboard, and speaker system—all fully optimized for this one-of-a-kind piano. The Facet also allows seamless access to digital content, online communications and new visual expressions displayed via the piano lid. The Facet's striking design is based around an imposing body and frame that seemingly floats above the base unit. The

piano's body, legs, frame, and base unit are influenced by polyhedron shapes that occur in nature and the 'Facet' name was inspired by the structure of a crystal. The absence of a soundboard further highlights the elegant geometry of this futuristic grand piano.

Designed for ultimate piano experiences

Although the cabinet introduces a unique aesthetic that challenges current perceptions, it also delivers the ultimate piano sound experience to both player and audience. As well as presenting a unique and exciting profile, the angular construction also helps project the ideal sound elements. We optimized the sounds from our latest PureAcoustic Piano Modeling technology and multispeaker Acoustic Projection System to perfectly match the potential of this piano.

Superior expression of sound

The rich, resonant piano sound comes from powerful speakers housed deep within the base. Due to the absence

of a conventional sound board, the cabinet sound flows through the outer frame before reflecting onto the piano's top board, projecting out towards the audience. An array of flat-panel speakers is located within the frame and the base to recreate the sonic resonance typically created by a piano's frame. The resonators found in the top board further enhance the depth of the sound. Finally, the nearfield speakers project the sounds most likely to be noticed by the player, including dramatic, dynamic overtones and a recreation of the noise the hammers make as they hit an acoustic piano string. The unique cabinet design helps deliver the ideal piano sound to the player, while also providing the perfect listening experience for the audience regardless of their position in the venue.

When is a piano more than a piano?

The Facet includes several advanced technologies that enrich the enjoyment of the instrument. The large Android-powered screen is built into the music stand, displaying a variety of musical contents such as digital music scores and online video lessons. Roland's Zenbeats music creation app can be used for composing and creating musical arrangements. Alexa, Amazon's cloud-based voice service, is also on hand to control the piano just by using your voice. You can even discover new ways of enjoying the piano, as the Facet generates evocative visuals based on how you play, before projecting them onto the piano's top board via a video projector housed in the base.

What could the piano become in future?

The Facet exists as a bold metaphor for Roland's digital piano vision. This piano has been designed to incorporate future breakthroughs in areas including sound source, keyboard, speaker system, entertainment and educational solutions. While we do not have any plans to release the Facet as a production model, we will continue to refine its design language and technologies to influence future generations of Roland pianos. And as this unique instrument evolves, we move closer to finding the ultimate concert grand - a piano freed from traditional conventions to blend appearance, expression, and potential in perfect harmony.



Winning designer Jong Chan Kim discussing the creation of Facet with Roland's piano engineers.





GP609 Grand Piano

THE ULTIMATE DIGITAL GRAND PIANO EXPERIENCE

As the flagship model of Roland's GP digital grand series, the GP609 embodies technology, tradition and head-turning style in one luxurious instrument. Sharing the same sound and responsive PHA-50 keyboard as the GP607, this model builds on the spec with a larger cabinet that traces the iconic contours of a classic grand piano—plus built-in casters that make the practical 148kg weight even more manageable. Hit a key, meanwhile, and you'll discover the powerful and immersive 7.1 onboard speaker system, whose array of six speakers and one woofer fills your music room with multi-dimensional sound, from rich bass to sparkling high-end.



Room-filling tone from powerful speakers

The GP609 includes a built-in sound system whose specially designed multi-channel audio technology delivers an immersive spatial sound that seems to come from the very heart of the instrument. Whether you're playing at home or in larger venues from restaurants to hotel lounges, you can rely on powerful, expressive, and controllable sound that fills any space.



An inspiring collection of sounds

Explore a variety of sounds, with an extensive selection of non-piano instrument types including strings, brass, organ, and many others. These extra sounds mean you can play a wide variety of music genres, which helps keep you motivated too. You can layer sounds as well, pressing a single key to play a piano note with a string sound layered on top.



Educational features and apps improve your playing

A host of onboard features can help you to become a better player, including a selection of built-in songs and a metronome for developing your timing. Or explore the huge variety of apps that can help you learn, streaming your smartphone's audio through the piano's speakers.



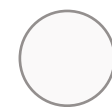
Practical casters for easy placement

While traditional grands can be cumbersome, the GP609's built-in casters make it easy to move this piano around your home and find the perfect position. Meanwhile, the space-saving footprint lets you experience all the thrills of playing a grand piano, even when space is limited. Home or away, it's the premium grand that's also a practical choice.

COLOUR OPTIONS



Polished Ebony



Polished White

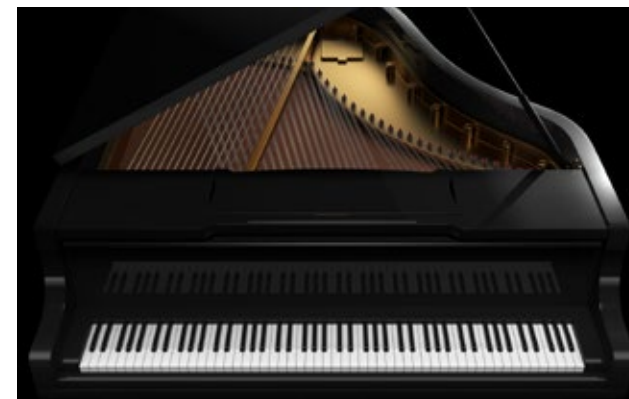




GP607 Grand Piano

COMPACT & AFFORDABLE MINI-GRAND PIANO

Many players aspire to make a grand piano the centrepiece of their home—but are put off by the initial investment, maintenance costs and back-breaking dimensions. The Roland GP607 has the solution. Available in polished ebony or polished white finishes, this digital model offers the unmistakable looks and playability of a classic grand piano—alongside authentic tone delivered through the 4.1 onboard speaker system comprising four speakers and one woofer. With a more compact cabinet (927x1407x949mm) and competitive price, this model is the ideal entry-point into Roland's premium GP series of digital grands.



SuperNATURAL Piano Modeling sound

The sound of an acoustic piano is the result of endless physical interactions. The key is pressed, the hammer strikes the string, the string resonates within the cabinet—before a multitude of further elements shape the final sound. Roland's SuperNATURAL Piano Modeling technology recreates all these factors, so for the first time, a digital piano truly sounds and behaves like an acoustic instrument.



Wirelessly stream audio through onboard speakers

One of the most enjoyable ways to develop your piano skills is by playing along with your favourite songs stored on a smartphone. Featuring built-in Bluetooth® wireless support, the GP607 goes even further, streaming your music through the piano's powerful internal speakers for an inspiring and immersive experience that puts you at the heart of the performance.



Smooth, responsive performance from PHA-50 keyboard

Just like the GP609, the GP607 features Roland's PHA-50 keyboard, giving discerning pianists a luxurious playing surface that feels smooth and responsive beneath your fingertips. Meanwhile, with each key combining wooden sides and a durable inner moulded material, the PHA-50 offers a traditional look and familiar feel that won't be marred by costly repairs.



Luxurious appearance and authentic grand piano feel

While the GP607 is packed with advanced technology, this digital model is reassuringly traditional when it comes to style. Combining classic lines with a space-saving compact grand piano cabinet, the GP607 makes a cultured statement in any stylish home, with a choice of polished ebony or polished white finishes to complement your décor.

COLOUR OPTIONS



Polished Ebony



Polished White

10
YEAR
WARRANTY

LX708

LUXURY EIGHT-SPEAKER PIANO WITH AN ELEGANT CABINET AND RICH ROOM FILLING SOUND



As the flagship of Roland's LX700 series, the LX708 recreates all the pleasures of playing a traditional grand piano in a great live venue. Standing out among the LX range with its tall, commanding cabinet and a lid that opens for optimum sound projection, this luxurious instrument makes a bold statement in your home. And with its powerful eight-speaker system ready to fill your home with music, the LX708 is the ultimate choice for discerning players.



A piano that communicates at the highest level

If you have high expectations of piano tone, the LX708 is designed to satisfy. Here, you'll find the choice of two world-class pianos in one instrument, each with an exceptional tonal character to spark fresh inspiration, delivered by a powerful speaker system that brings you into the heart of the performance. For the most discerning players, the LX708 is a sound investment.



Beautifully simple. Simply Beautiful.

When a piano sounds as good as the LX708, it should look good too. From the tall, elegant cabinet flanked by one-piece side panels, to the svelte front legs and sophisticated curves, this instrument draws you in and compels you to start playing. With polished ebony, polished white or charcoal black finishes to complement your home, the LX708 is a centrepiece for any living space.



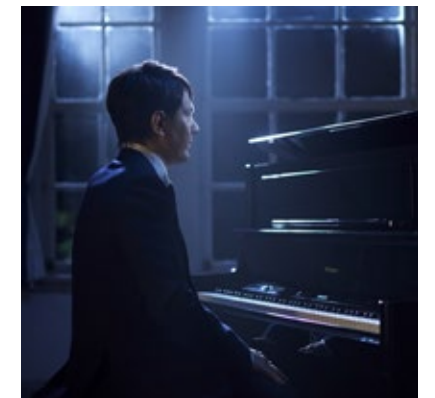
Sensational sound that surrounds you

The LX708 features Roland's innovative Acoustic Projection System, reproducing the rich, room-filling sound of a grand piano in a great performance venue. Housed within the instrument is a multi-speaker audio system driven by a powerful amplifier, with each speaker fulfilling a specific role in delivering superior piano tone.



The power to create—at your fingertips

The keyboard and pedals on the LX708 respond faithfully to your playing, with a level of expression limited only by your imagination. Heavy or light, fast or slow—however you play, this keyboard and pedals have the accuracy and expression to support you.



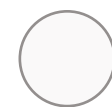
Great performances start with great sound

Roland's latest PureAcoustic Piano Modeling draws on advanced technology to digitally reproduce the physical interactions that take place within a traditional grand piano. The result is a beautifully rich sound that, until now, was only possible from an acoustic instrument.

COLOUR OPTIONS



Polished Ebony



Polished White



Charcoal Black

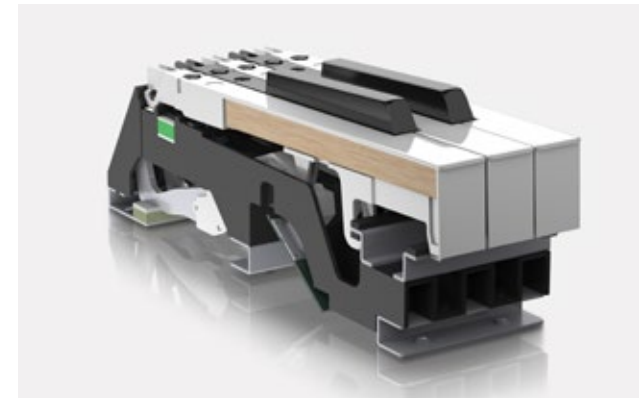


LX706

THE HIGH-END HOME PIANO WITH SIX-SPEAKER SYSTEM,
GRAND TONE AND AMBIENCE EFFECTS



For players investigating the Roland LX700 series and looking for the right balance between features and price, the LX706 demands a closer look. Designed for discerning pianists, the LX706 sits at the mid-point of the LX700 range, recreating the classic performance of an acoustic grand in a home-friendly format. Just like the flagship LX708 model, you'll find a choice of authentic piano tones and onboard ambience technology, plus a dynamic Hybrid Grand Keyboard to spark your creativity. But with a more compact cabinet, closed-lid design and six-speaker system, the LX706 matches its pro-level performance with a budget-conscious price.



Superior expression from dynamic keyboard and pedals

The LX706 brings character and expression to your playing with the Hybrid Grand Keyboard and Progressive Damper Action pedals. Each key is longer than typical digital pianos, so the pivot-point sits further back, less pressure is needed and your hands stay fresh for longer periods. While the keyboard offers the ideal balance of pressure, momentum, return movement and smooth vertical travel, the pedals support a variety of nuanced techniques and bring demanding pieces to life.



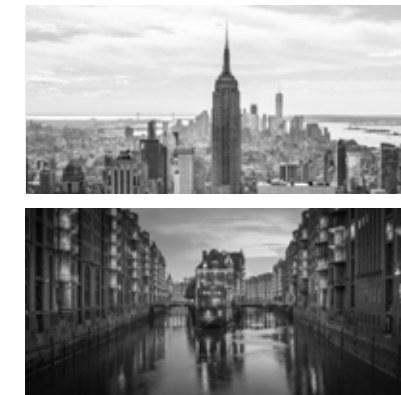
Compact cabinet design that invites you to play

With its shorter cabinet height and closed-lid format, this sleek model is ideal for players who can't spare the space for the taller LX708. The clean lines and lustrous finish instantly catch the eye, while closer inspection reveals the signature build features that make the LX series so enticing. Traditional and timeless—but with a twist—the LX706 is an instrument that complements your living space without dominating it. Available in polished ebony, dark rosewood and charcoal.



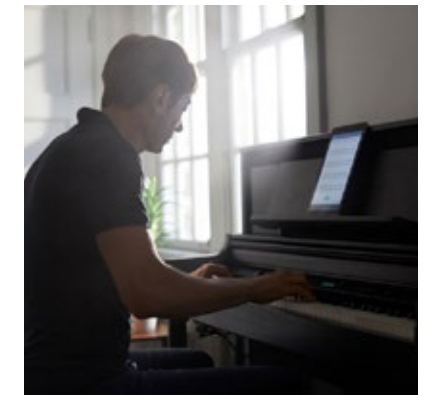
Three-way, six-speaker system

With a more streamlined take on the LX708's Acoustic Projection System, the LX706 is still powerful and flexible enough for any musical scenario, with a three-way, six-speaker layout. Each of the three pairs of speakers are optimized to deliver superior sound reproduction across the piano's dynamic range.



Two different piano models

The LX700 series includes two completely different piano models; a classic European grand with a rich, deep tonal character, and an American grand that emphasizes clarity and brightness. This approach goes far beyond the typical sound variations found on conventional digital pianos. Think of it as owning two world-class pianos, representing two distinct-but-complementary sides of the piano's tonal spectrum. You can even customize the sound so it's exactly how you like it.



Cutting-edge technology across the range

Each model in the LX700 series offers a different combination of cabinet design, keyboard, pedals and onboard speaker layout. But whichever LX700 piano you choose, you'll enjoy many of the same headline features that are standard across the range.

COLOUR OPTIONS



Polished Ebony



Dark Rosewood



Charcoal Black

10
YEAR
WARRANTY

LX705

SUPERIOR PIANO TONE WITH FOUR-SPEAKER SYSTEM IN THE LX700 SERIES' MOST AFFORDABLE MODEL



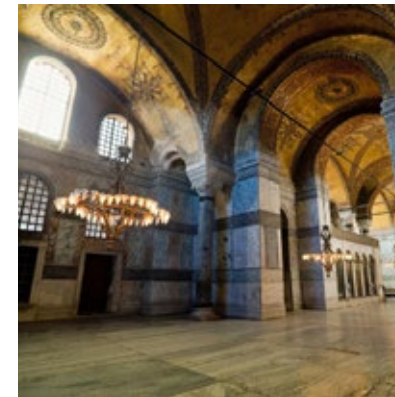
Punchy sound from powerful four-speaker system

While it has fewer speakers than the LX708 and LX706, the LX705's Acoustic Projection System still offers ample power and punch for most musical scenarios, thanks to a two-way, four-speaker layout where each section has a specific role in delivering superior tone. The four speakers are split into two pairs, with each pair optimised to deliver superior sound reproduction across the piano's dynamic range. Whether you're playing or streaming music, you'll hear every note in immersive, crystal-clear sound.



Stylish cabinet design with a compact footprint

Boasting the most compact cabinet in the LX700 series, the LX705 model fits snugly into your living room or apartment, complementing your décor with its clean lines and natural finish. Traditional and timeless—but with a twist—the LX705 is an instrument that makes a stylish statement without dominating your home. Available in polished ebony, dark rosewood, charcoal and light oak.



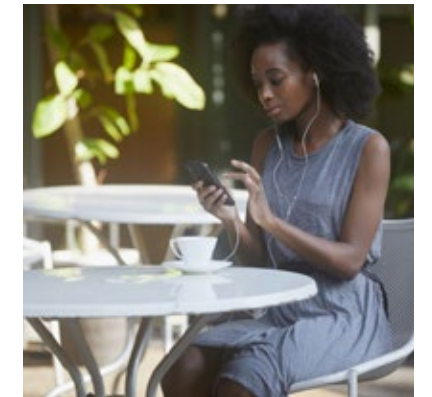
Concert hall sound, at home

The LX705 not only reproduces the rich, powerful sound of a grand piano, but also the space where it might typically be played. You'll add another dimension to your enjoyment of the instrument as you discover how it sounds and feels to play in larger spaces with natural ambience, including concert halls, cathedrals, and studios.



PHA-50 keyboard

When it comes to the wish-list for your new piano, feel should be a priority. From building basic skills to expressing yourself in a demanding piece, the LX705 always keeps you inspired with its PHA-50 keyboard. Whether you're hammering or tickling the keys, you're in control of a responsive keyboard that reacts to your touch and technique.



Practise smarter with Piano Everyday App

Roland's Piano Every Day app supports and encourages daily practice, helping you stick with a routine and develop your musical skills faster. You can browse a variety of music scores ranging from classical to pop, in addition to the songs already onboard your Roland LX700 series piano.

It needn't cost the earth to enjoy the thrilling performance of an acoustic grand piano at home. Introducing the Roland LX705. While the most demanding pianists investigate the flagship LX708 and mid-priced LX706 models, budget-conscious musicians will be impressed by the LX705, which retains many of the same standout features in a highly competitive package. Inside the LX700 series' most compact cabinet, you'll find a choice of authentic piano tones and onboard ambience effects, plus tutorial features, Bluetooth connectivity and the responsive PHA-50 keyboard that lets your fingers fly. And with a four-speaker system bringing your music into the world, the entry-level to the LX700 series still punches well above its weight.

COLOUR OPTIONS



Polished Ebony



Light Oak



Dark Rosewood



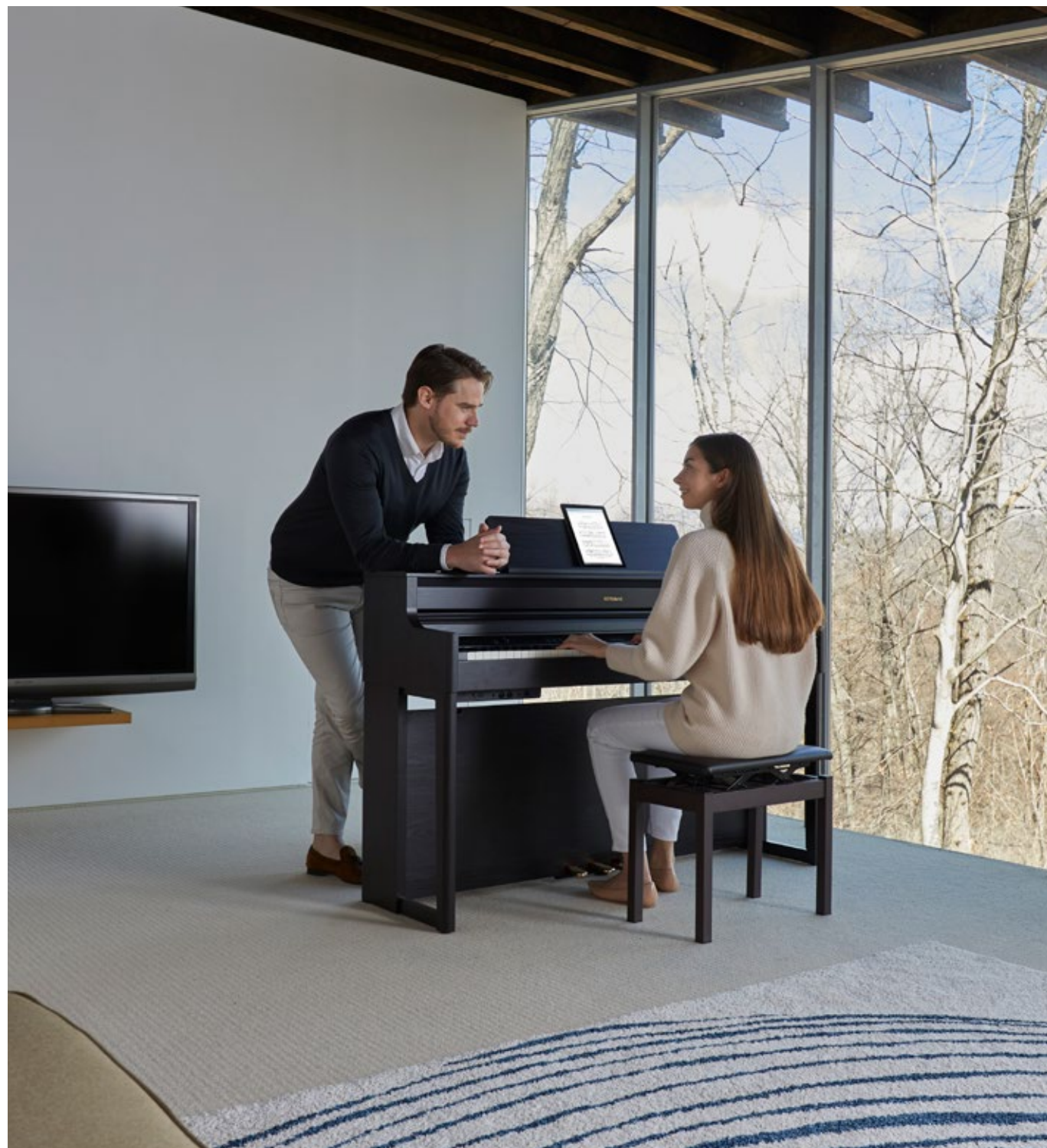
Charcoal Black

10
YEAR
WARRANTY

HP704

PREMIUM LOOK AND AUTHENTIC PIANO TOUCH WITH FOUR-SPEAKER AUDIO SYSTEM

The HP704 provides the style, performance, and pristine sound projection you'd expect from a premium studio piano. With its sleek, sophisticated cabinet design, this digital piano makes a statement wherever you play it—and a range of finishes ensures it fits in anywhere. The advanced PHA-50 keyboard, onboard tutorial features, and Bluetooth connectivity with music apps mean you'll always be inspired to play, explore and improve. And the tall, elegant cabinet houses a powerful four-speaker audio system that delivers dynamic, room-filling sound as you perform—or while you relax by streaming your favorite tunes.



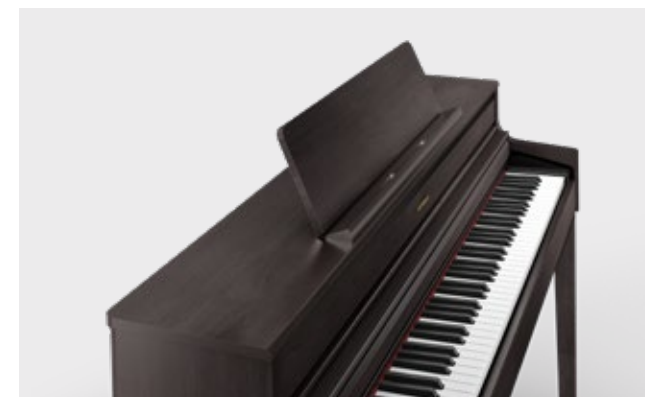
Learn faster with the piano every day app

Studying piano doesn't have to be a chore. Running on smartphones or tablets, and communicating with your HP704 piano via Bluetooth®, Roland's Piano Every Day app lets you play along with your favourite tunes, record your performances, then listen back and self-assess. Just five minutes daily will fast-track your musical skills.



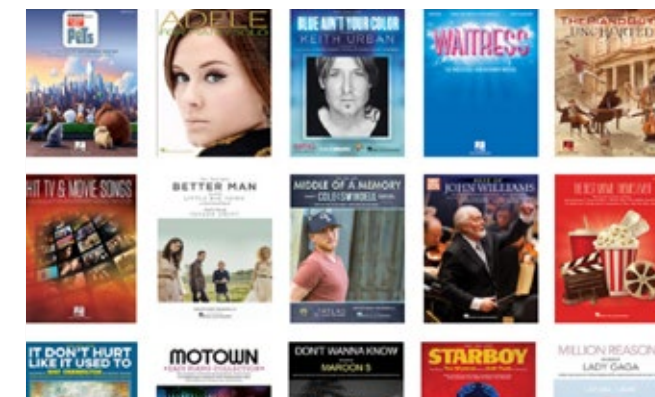
Immersive four-speaker system

The HP704's SuperNATURAL technology captures the essence of an acoustic piano in every note. Meanwhile, as you play, your performance comes to life through an advanced four-speaker Acoustic Projection System that delivers sparkling highs, warm lows, and everything in-between. The four speakers are configured as two pairs inside the instrument, and each pair is optimised to deliver superior sound reproduction across the piano's vast dynamic range.



Simple and sophisticated design

Roland's designers focus not just on sound, but also on crafting an instrument that defies you to walk past without playing. From the alluring cabinet to the elegant legs and sophisticated curves based on the design concept of the flagship LX Series, the HP704 is a statement in its own right. Each finish has been carefully selected and manufactured, so you can choose a piano that truly looks at home in your living space.



Your favorite sheet music in seconds

With the Piano Every Day app, there's no need to pay delivery charges or fill your home with music books. It couldn't be easier to browse over 70,000 digital music scores via Sheet Music Direct, where you'll find something for everyone, from chart hits and movie soundtracks that get your children practising, to timeless pieces from the jazz, classical, rock and blues genres.

COLOUR OPTIONS



Dark Rosewood



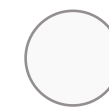
Charcoal Black



Polished Ebony



Light Oak



White

10
YEAR
WARRANTY

HP702

UNCOMPROMISING PIANO PERFORMANCE AND STYLE

The affordable HP702 brings style and premium piano performance into your home. Practice at midnight, immersed in sound from the Headphones 3D Ambience feature. Wirelessly stream songs and app audio via Bluetooth or try the onboard tutorials and improve your playing skills. Whatever the musical scenario, the HP702 delivers a superior piano experience—for far less than you think. Taking inspiration from the elegant and curvaceous cabinets of traditional pianos the HP series brings sophistication to any home or décor. Plus, with compact dimensions, a smaller footprint, and lighter weight than a traditional acoustic, you can move your HP700 piano around until you find the perfect spot.



The pro-grade piano they'll play for life

It's frustrating to buy an entry-level piano, only to realise its feel and tone are holding your child back. With the Roland HP702, they'll be supported every step of their musical journey. Authentic tones and welcoming feel provide first-timers with great sound and the inspiration to keep going, and as their skills develop, this professional model keeps up. When you choose the HP702, you're investing in a piano that will go the distance.



Stylish cabinet design

Designed for both form and function, the compact HP702 fits seamlessly in any living room or apartment, complementing your home décor with the clean lines, natural finish and sleek curves of its stylish cabinet. Traditional and timeless, but with a contemporary twist, this versatile model makes a subtle statement without having to shout. Available in charcoal, dark rosewood, light oak and white finishes.



PHA-4 Standard keyboard

From beginners to seasoned performers, the HP702's PHA-4 Standard keyboard brings out the best in your playing. With fast-key repetition and high-resolution sensing, this responsive keyboard satisfies the most demanding pianists—so you won't need to upgrade as your technique improves. The keys even replicate the look and feel of real ebony and ivory, while their textured, moisture-absorbing properties mean your fingers won't slip off.



Learn faster with the piano every day app

Studying piano doesn't have to feel like a battle. With Roland's Piano Every Day app, just five minutes of focused daily practice can improve your skills. It runs on your smartphone or tablet, and communicates with the piano via Bluetooth®, so it's always ready for action. Find your favourite tunes and play along, while the app automatically records your performance or practice session.

COLOUR OPTIONS



Light Oak



Dark Rosewood



Charcoal Black



White



KIYOLA KF-10

ARTISAN DIGITAL PIANO COMBINES HAND-CRAFTED SOLID WOOD CABINET AND SUPERNATURAL MODELLING TECHNOLOGY



Digital technology meets artisan tradition in the new Kiyola KF-10. Created in collaboration between Roland and Japanese furniture designer Karimoku, this refined digital piano achieves a perfect harmony of form and function: a powerful instrument that makes a sophisticated statement in your home. With its model name translating as 'elegance and beauty', the Kiyola KF-10 is visually unique in the modern piano market, offering an all-natural, hand-crafted wood cabinet that complements your living space and lifestyle. Meanwhile, the presence of Roland's innovative digital piano technology delivers the performance you demand as a player, with flagship features including SuperNATURAL Piano sound modelling, dynamic sensing technology via the PHA-50 keyboard, wireless Bluetooth® connectivity to your favorite music-making apps and a dynamic array of speakers that fill your home with sound. Available in a Walnut, Pure Oak or Sheer White finish, with a foot pedal and ergonomically designed piano bench included, the Kiyola KF-10 is a digital piano to both admire and enjoy.



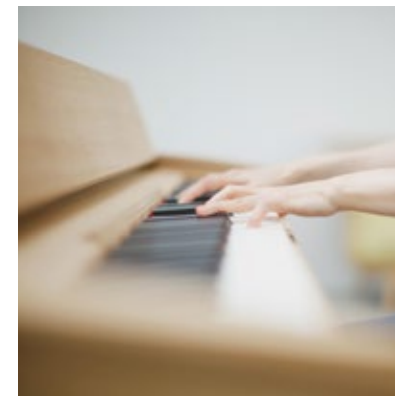
Hand-built by masters of traditional Japanese wood crafting

Renowned for their perfectionism, Karimoku's experienced craftsmen build each Kiyola KF-10 cabinet at their Japanese factory, located in the same region as Roland's headquarters and factories. The cabinets are then shipped to us for assembly of the internal electronics, speakers and keyboards. Using environmentally friendly materials and methods at every stage, this collaborative manufacturing process ensures the Kiyola series is ethical and of consistently high quality.



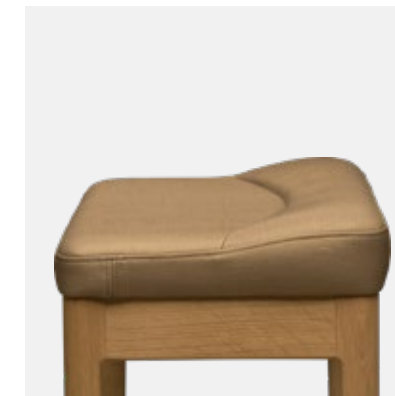
Karimoku hand-crafted all-wood cabinet

Designed in-house by Karimoku—Japan's largest wood furniture-maker since 1940, and a noted exponent of environmentally friendly, low-formaldehyde timbers—the Kiyola KF-10 is unlike any other piano on the market. Hand-crafted in Japan from all-natural wood, the result is a slim, stylish, ergonomically contoured cabinet that complements your living space like a piece of artisan furniture. Perfect for players who want to make a statement, the individual grain patterns are unique to each piano, as is the natural ageing of the wood.



Playable PHA-50 keyboard

Not only a refined visual statement, the Kiyola KF-10 is also highly playable, featuring the latest PHA-50 keyboard whose dynamic response lets you perform with deeper expression. Each key combines wooden sides with a durable inner moulded material, giving both a traditional look and many years of maintenance-free play.



Ergonomic piano bench

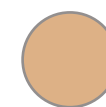
Kiyola KF-10 takes advantage of Karimoku's huge experience of furniture design—and associated scientific research—by including an ergonomically designed piano bench. It features a distinctive arched shape that promotes good posture, a wider sitting area that distributes your weight more evenly, and a cushion made from soft, high-density foam.



Wireless Bluetooth® connectivity to music apps

The Kiyola KF-10 can wirelessly connect to a smartphone or tablet for access to the best music apps. Controlling the dedicated app via your Android or iOS device, you'll be able to personalise your piano by selecting internal sounds, play onboard songs or set the built-in metronome.

COLOUR OPTIONS



Pure Oak



Sheer White



Walnut

DP603

A SLIM AND STYLISH DIGITAL PIANO PERFECT FOR MODERN LIVING SPACES

Blending authentic piano sounds with contemporary design, the Roland DP603 is the ideal choice for modern players. The stylish cabinet and minimalist design are a perfect match for any modern living space. But the DP603's appeal is more than skin-deep, featuring our latest SuperNATURAL Piano Modeling for rich, dynamic sounds and a PHA-50 keyboard that lets you perform demanding pieces with expression and character. Meanwhile, a selection of onboard practice features is backed by wireless connectivity to a tablet or smartphone for audio playback and app connectivity, making the DP603 a digital piano that keeps your skills developing.



A stylish piano to complement the modern home

The Roland DP603 stands apart from other models on the market. Slim, stylish and understated, the linear cabinet design keeps curves and embellishments to a minimum, making a subtle but sophisticated statement in your home. An integrated keyboard lid opens smoothly to provide an elegant music rest, then closes discreetly with a safety-conscious soft-fall motion. Despite its compact 35cm (13.5-inch) depth, the DP603 offers the same acclaimed durability that Roland's DP series has been famous for since 2003.



Learn faster with digital technology

The DP603 supports your development every step of the way. Improve faster with 300 onboard songs ready for playing, a built-in metronome that tightens your timing, and an onboard recorder to assess your progress. Meanwhile, USB playback/save functions enhance practice sessions, while Twin Piano mode lets a learner and teacher sit together and play in the same key range. Plus, by connecting with your tablet via Bluetooth® MIDI or USB, you can access online practice videos or music apps like Roland's Piano Partner 2.



A Dynamic Speaker System fills your home with music

The DP603's onboard speaker system projects warm, enveloping sound, with controllable volume that lets you play loudly or quietly to suit the scenario. This piano goes even further to double as a wireless speaker system, so you won't need to clutter your home with an additional hi-fi or stereo. Using Bluetooth wireless technology, simply connect the Roland DP603 with your smartphone or tablet, and then play back your favorite songs through the internal speakers. Or better still, play along with them!



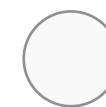
Express yourself with SuperNATURAL Piano Modeling

Style meets substance in the Roland DP603, which combines its minimalist look with player-friendly onboard tech. This model features the same sound engine as Roland's flagship LX/HP models, and you'll hear the benefits of our acclaimed SuperNATURAL Piano Modeling in performance that flawlessly recreates the rich, dynamic response of an acoustic instrument. You'll also appreciate the new PHA-50 keyboard, whose blend of wood and moulded material means it plays like traditional ivory, but without the associated maintenance and expense.

COLOUR OPTIONS



Polished Ebony



Polished White



Contemporary Black

10
YEAR
WARRANTY



APPS THAT HELP GET THE MOST FROM YOUR PIANO PLAYING

Roland's digital pianos make your playing experience more fun and productive, giving instant access to all the best apps via Bluetooth® or USB. Whether you choose Piano Every Day for more effective practice, Piano Partner 2 for multi-sensory interaction with your instrument's onboard songs, or Piano Designer to fine-tune the sound parameters of your chosen model, all you need is a smartphone or tablet to open up a world of possibilities.



PIANO EVERY DAY APP

Piano Every Day is a unique and innovative app for Roland LX700 and HP700 series pianos, which can also be used with other digital or acoustic pianos to encourage regular practice. A variety of daily exercises focus on every aspect of technique, developing the ability of each hand (and both hands together), teaching you to play at various tempos and even letting you record your final practice session to see how far you've come. Piano Every Day is available free from the App Store (iOS) and Google Play (Android). Download now and become a better player today.



Compatible Pianos: LX705, LX706, LX708, HP702, HP704



PIANO PARTNER 2 VERSION 2.0

The Piano Partner 2 app for iOS and Android mobile devices provides a friendly, interactive way to help you learn and enjoy music with your Roland digital piano. Songs and DigiScore Lite show the piano's internal music collection on your device's display, while Rhythm and Flash Card allow you to build skills with intelligent accompaniment and engaging music exercises. Piano Partner 2 also enables your mobile device to work as a remote controller for your Roland piano, offering an intuitive graphic interface for even easier operation.



Compatible Pianos: GP609, GP607, LX-17, LX-7, HP605, HP603A/HP603, HP601, RP501R, RP102, KIYOLA KF-10, DP603, F-140R, FP-90, FP-60, FP-30, FP-10, GO:PIANO(GO-61P)*, GP:PIANO88(GO-88P), GO:PIANO with Alexa Built-in(GO-61P-A)*,



PIANO DESIGNER

Turn your Roland digital piano into a custom instrument with Piano Designer. This groundbreaking app lets you access your piano's internal parameters and tailor the sound elements to suit your personal taste, playing style, and musical projects. Just as an experienced technician fine-tunes an acoustic piano for an artist or session, the Piano Designer app makes it easy to control these elements from the graphical touchscreen on your mobile device—or choose from ready-to-play settings created by world-renowned experts.



Compatible Models: LX708, LX706, LX705, HP704, HP702, HP701 (Region Limited Model), GP609, GP607, LX-17, LX-7, HP605, HP603, HP603A, HP601, KF-10, LX-15e, HP508, HP506, HP504, DP603, DP90Se, DP90e, FP-90, FP-80, FP-60



PIANO SPECIFICATION COMPARISON CHART

Model	GP609 Flagship Mini Grand Piano	GP607 Mini Grand Piano	LX708 Flagship Home Piano
Sound Generator	SuperNatural Piano Modeling	SuperNatural Piano Modeling	PureAcoustic Modeling
Tones	319	307	324
Keyboard	PHA-50	PHA-50	Hybrid Grand with Haptic Feedback
Number of speakers	7.1	5.1	8
Speaker size	25cm, 2 x (12cm + 5cm)	20cm, 2 x (12cm + 5cm)	2 x (25cm with Sp + 12cm x 8cm with Sp Box + 12cm x 8cm + 2.5cm)
Rated power output	20W, 2 x (12W + 11W)	20W, 2 x (20W + 5W)	2 x (20W + 6W + 6W + 5W)
Headphone 3D Ambience	Yes	Yes	Yes
Wireless connection	Bluetooth MIDI and Audio	Bluetooth MIDI and Audio	Bluetooth MIDI and Audio
Weight	148kg	86kg	110.5kg
Dimensions	1445W x 996H x 1501D (mm)	1407W x 927H x 949D (mm)	1395W x 1180H x 491D (mm)
Colours available	Polished Ebony, Polished White	Polished Ebony, Polished White	Charcoal Black, Polished Ebony, Polished White

Model	LX706 Concert Home Piano	LX705 Luxury Home Piano	HP704 Premium Home Piano
Sound Generator	PureAcoustic Modeling	PureAcoustic Modeling	SuperNatural Piano Modeling
Tones	324	324	324
Keyboard	Hybrid Grand	PHA-50	PHA-50
Number of speakers	6	4	4
Speaker size	2 x (25cm with Sp Box + 12cm x 8cm with Sp Box + 2.5cm)	2 x (12cm + 2.5cm with Sp Box + 5cm)	2 x 12cm + 2.5cm, 2 x 5cm
Rated power output	2 x (25W + 7W + 5W)	2 x 25W, 2 x 5W	2 x 25W, 2 x 5W
Headphone 3D Ambience	Yes	Yes	Yes
Wireless connection	Bluetooth MIDI and Audio	Bluetooth MIDI and Audio	Bluetooth MIDI and Audio
Weight	98kg	76.1kg	61kg
Dimensions	1383W x 1118H x 493D (mm)	1383W x 1038H x 468D (mm)	1377W x 1113H x 468D (mm)
Colours available	Charcoal Black, Dark Rosewood, Polished Ebony	Charcoal Black, Dark Rosewood, Light Oak, Polished Ebony	Charcoal Black, Dark Rosewood, White, Light Oak, Polished Ebony

Model	HP702 Home Piano	KF-10 Compact Artisan Piano	DP603 Compact Premium Piano
Sound Generator	SuperNatural Piano Modeling	SuperNatural Piano Modeling	SuperNatural Piano Modeling
Tones	324	271	307
Keyboard	PHA-4 Standard	PHA-50	PHA-50
Number of speakers	2	4	2
Speaker size	2 x 12cm	2 x 12cm + 2 x 5cm	2 x 12cm
Rated power output	2 x 14W	2 x 30W	2 x 30W
Headphone 3D Ambience	Yes	Yes	Yes
Wireless connection	Bluetooth MIDI and Audio	Bluetooth MIDI and Audio	Bluetooth MIDI and Audio
Weight	54.4kg	33.2kg	47kg
Dimensions	1377W x 1067H x 468D (mm)	1396W x 782H x 337D (mm)	1398W x 783H x 311D (mm)
Colours available	Charcoal Black, Dark Rosewood, White, Light Oak	Pure Oak, Sheer White, Walnut	Contemporary Black, Polished Ebony, Polished White





The Bluetooth feature may not be available depending on the country where you purchased the product. All specifications and appearances are subject to change without notice.

ROLAND and SuperNATURAL are either registered trademarks or trademarks of Roland Corporation in the United States and/or other countries.

Apple, iPad and iPhone are trademarks of Apple Inc., registered in the U.S. and other countries. App Store is a service mark of Apple Inc. Android is a trademark of Google Inc.

Google Play and the Google Play logo are trademarks of Google Inc. The Bluetooth® word mark and logos are registered trademarks owned by Bluetooth SIG, Inc. and any use of such marks by Roland is under license. Company names and product names appearing in this document are registered trademarks or trademarks of their respective owners.

It is forbidden by law to make an audio recording, video recording, copy or revision of a third party's copyrighted work (musical work, video work, broadcast, live performance, or other work), whether in whole or in part, and distribute, sell, lease, perform, or broadcast it without the permission of the copyright owner. Do not use Roland products for purposes that could infringe on a copyright held by a third party. We assume no responsibility whatsoever with regard to any infringements of third-party copyrights arising through your use of this product.

www.roland.com